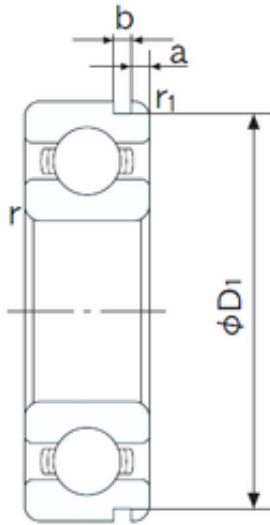




DRIVESHAFT ANDERSON, INC.



17 mm x 35 mm x 10 mm NACHI 6003N deep groove ball bearings

Bearing No. 6003N

6003N Bearing 2D drawings and 3D CAD models

Size	17x35x10 mm
Bore Diameter	17 mm
Outer Diameter	35 mm
Width	10 mm
d	17 mm
D	35 mm
B	10 mm
C	10 mm
a	2.06 mm
b	1.35 mm
r min.	0.3 mm
r1 min.	0.3 mm
D1	33.17 mm
Weight	0.041 Kg
Basic dynamic load rating (C)	6 kN
Basic static load rating (C0)	3,25 kN
(Grease) Lubrication Speed	20000 r/min
Bore Type	Cylindrical Bore
Enclosure	Open
Configuration	Single Row
Bore Size	17 mm
Outside Diameter	35 mm
Width	10 mm
Fillet Radius/Chamfer	0.3 mm
r1	0.3 mm



DRIVESHAFT ANDERSON, INC.

Groove Width	1.4 mm
Groove Diameter	33.2 mm
a (max)	2.1 mm
Dynamic Load Rating	6,000 N
Static Load Rating	3,250 N
Limiting Speed - Grease	22,000 rpm
Limiting Speed - Oil	26,000 rpm
Factor fo	14.3
Radial Clearance	0.003 to 0.018 mm
da (min)	19 mm
Da (max)	33 mm
Dx (min)	40.5 mm
ra (max)	0.3 mm
Cy (max)	2.9 mm